

DIXIE-MARCO, INC.
SERVICE BULLETIN #135

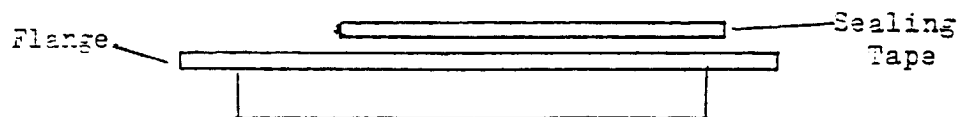
Date: October 12, 1971

MODELS: Executive with Ice-O-Vend 265

SUBJECT: Drain Lip

REASON: To prevent ice and melt water from the ice discharge port from dropping down into the Vender.

ORDER AS: B1280.06 Drain Lip, with Sealing Tape
Installed - - For plastic Ice Hopper.



- Do This:
1. Place flange of the "Drain Lip" over the ice discharge port on the underside of the plastic hopper.
 2. Make sure that no part of the "Drain Lip" extends over discharge port opening.
 3. Using the four (4) holes in the "Drain Lip" as a Template, drill four (4) 1/8" holes into the Ice Hopper - Carefully - permit drill to penetrate 3/16".
 4. Fasten "Drain Lip" with Sheet Metal Screws provided.

KIT CONSISTS OF:

1	B1280.06	Drain Lip
4	905,500,280.01	Double Faced Sealing Tape - installed on drain lip
4	900,300,280.01	#8 x 5/8 Type A Sheet Metal Screws.

NOTE: See Service Bulletin #130.

Dixie-Marco, Inc.
Service Department